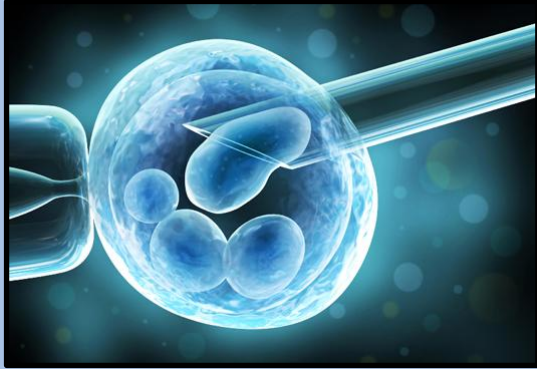


AMH/MIS HS

An high sensitivity ELISA test for the detection of anti-Mullerian hormone in serum and plasma samples.



AMH/MIS

- The *anti-Mullerian hormone* is a glycoprotein normally secreted by the testis Sertoli cells during the embryogenesis in the embryonic phase.
- The concentration of *AMH* in the sample is not critically influenced by the storage and transport modalities if sample collection practices are respected.
- In the woman, *AMH* is a powerful diagnostic tool for the reproductive endocrinology because it is not affected by the specific day in which is detected.

To place an order:

REF	Product name
ELFP008	AMH/MIS HS

Performances

Analytical sensitivity	0,025 ng/ml
Specificity	100%
Precision	CV = 5%
Linearity	r = 1,05
Dinamic range	0.06—14.2 ng/mL

- Excellent correlation with reference methods
- Calibrators based on recombinant AMH
- Specific for all the forms of human AMH
- Only **25 µl** of sample needed
- Results in **2,5 hours**

sales@immunospark.com